

Access Statement for Drake Cottage

- Cars can be driven to the door of Drake Cottage from a tarmac courtyard parking area
- There are 3 steps up to the front door, opening width 86cm
- Front door leads straight into the kitchen/dining area, tiled floor, ceiling lighting
- Door opening 76cm leading from kitchen to lounge area which has a wooden floor. 1 leather two-seater sofa and 1 leather chair. Single pendant ceiling light plus table lamps
- French doors lead from lounge to level outside patio and eating area, door opening 174cm – small threshold out to patio
- Staircase from lounge to first floor – 9 risers to a half landing approximately 24 sq cms, right handed turn to 4 more risers to top. Banister on first flight, no handrail after the half landing. Stairs are carpeted.
- Bedroom 1 – 4'6" double bed, 2 x bedside tables, 2 x bedside lamps, 1 x double wardrobe, 1 x chest of drawers. Distance from bed to walls approximately 75. No space for furniture to be moved. Single pendant ceiling light, carpeted, velux roof light.
- Bedroom 2 – 4' bed against the wall, 1 x bedside table, 1 x bedside lamp, 1 x single wardrobe. Single pendant ceiling light, carpeted, velux roof light. No space for furniture to be moved.
- Bathroom – 120cm bath with shower over, glass shower screen which can be swung open. Bath height 50cm, tiled floor and walls, halogen down lighters in ceiling, no window.

GAS EMERGENCY
CONTROL VALVE.

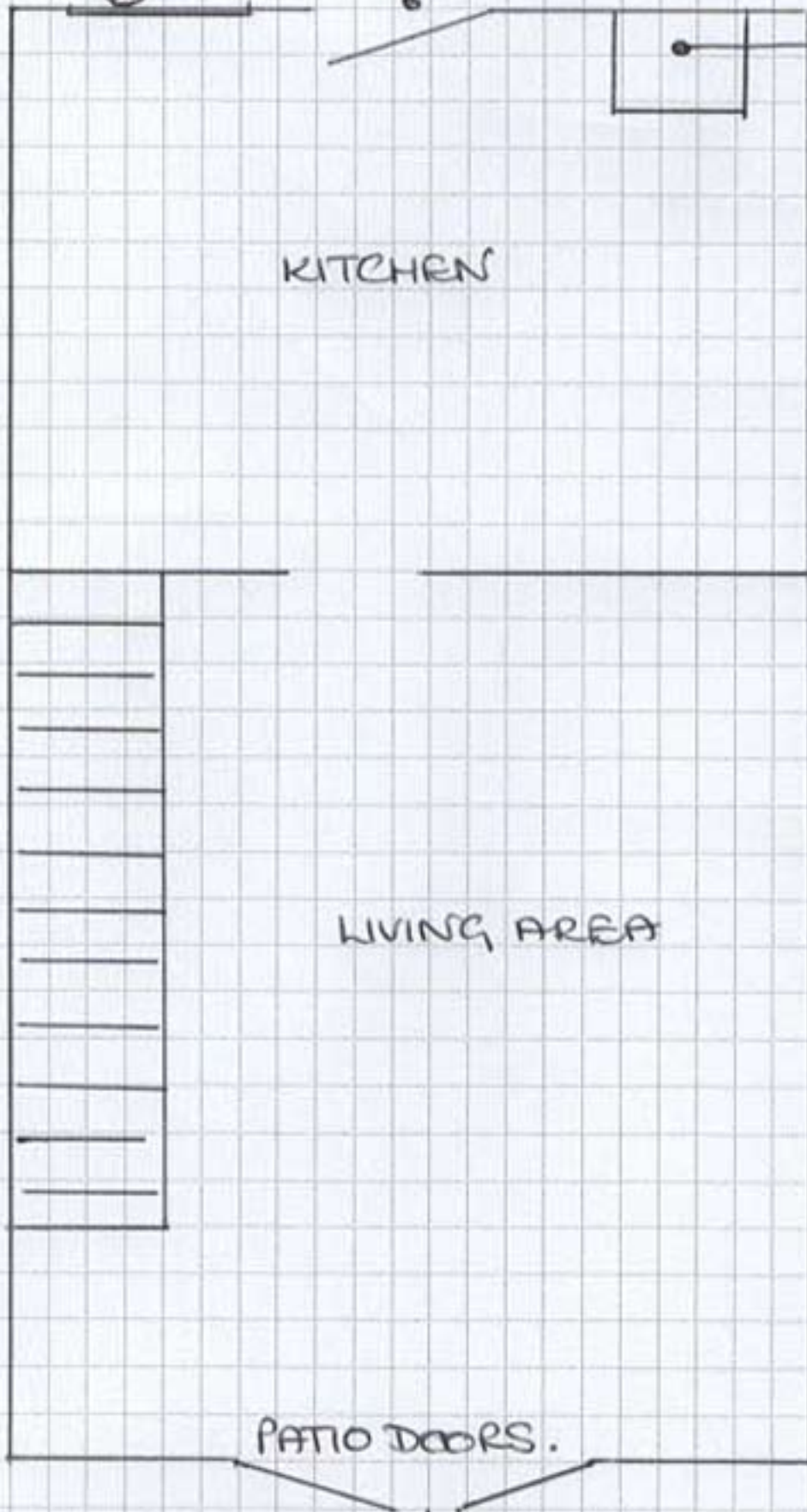
ENTRANCE

GAS FIRED
BOILER

KITCHEN

LIVING AREA

PATIO DOORS.



BATHROOM
NO WINDOW.

VELUX

BEDROOM 2.
1 SINGLE.

CUPBOARD
OVER
STAIRS

BEDROOM 1
2 SINGLES OR
1 DOUBLE.

VELUX

