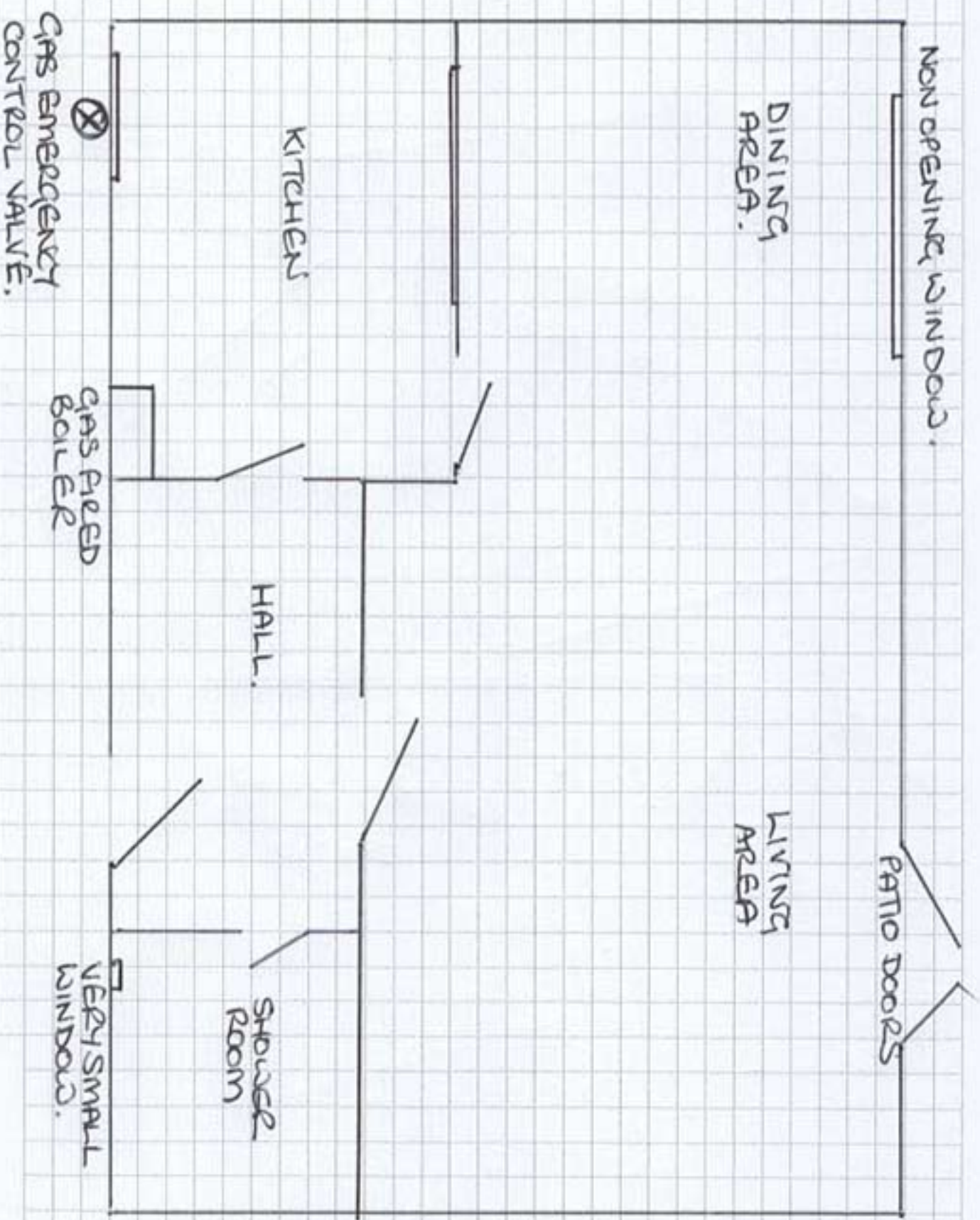


## **Access Statement for Cart Cottage**

- Cars can be driven to the door of Cart Cottage from a tarmacadam courtyard area
- There are two steps up to the front door which opens directly into a hallway. The floor is tiled. Ceiling light. Door opening is 86cm.
- Door to right, opening measures 82cm, which leads into shower room containing a shower cubicle with a step up, lavatory and wash hand basin. The floor is tiled.
- Door to left which leads into the kitchen, floor is tiled, door width is 70cm.
- Door straight ahead, opening measures 81cm, leading into dining/living area, wood floors, with Patio Doors leading to a level garden and patio area with an opening of 192cm. 1 x dining table, 6 x dining chairs, 3 x sideboard, 2 x leather sofas, 1 x armchair, 1 x occasional table.
- Stairs to first floor, 13 risers straight, carpeted.
- There is a low beam across the landing, which has been padded and carries warnings! This is a character of this house.
- Bedroom 1 – 1 x Superking size double bed or 2 single beds, Velux rooflight opening, regular windows non-opening. Carpeted.
- Bedroom 2 – 2 x single beds, velux roof light, carpeted.
- Bedroom 3 – 2 x single beds, carpeted
- Bathroom – 120cm bath with shower over, glass shower screen which can be swung open. Height of bath 50cm, tiled floors, halogen downlighters.



BATHROOM  
NO WINDOW.

VELUX

BEDROOM 2.  
1 SINGLE.

CUPBOARD  
OVER  
STAIRS

BEDROOM 1  
2 SINGLES OR  
1 DOUBLE.

VELUX

